



SSM Schärer Schweiter Mettler AG

General Presentation 2017



Rieter Group – Premium Textile Components



SSM Textile Machinery is a subsidiary of the Rieter Group based in Winterthur. The Premium Textile Components Division provides technology components & service facilities both for spinning mills and machinery manufacturers. The business group is represented on the market through five brands; for further information please visit www.rieter.com



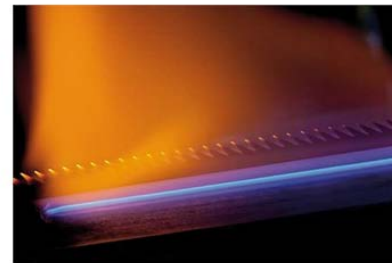
RIETER



Suessen



Bräcker



Graf



Novibra



SSM

SSM: Who are we?



A Long History in the Textile Business



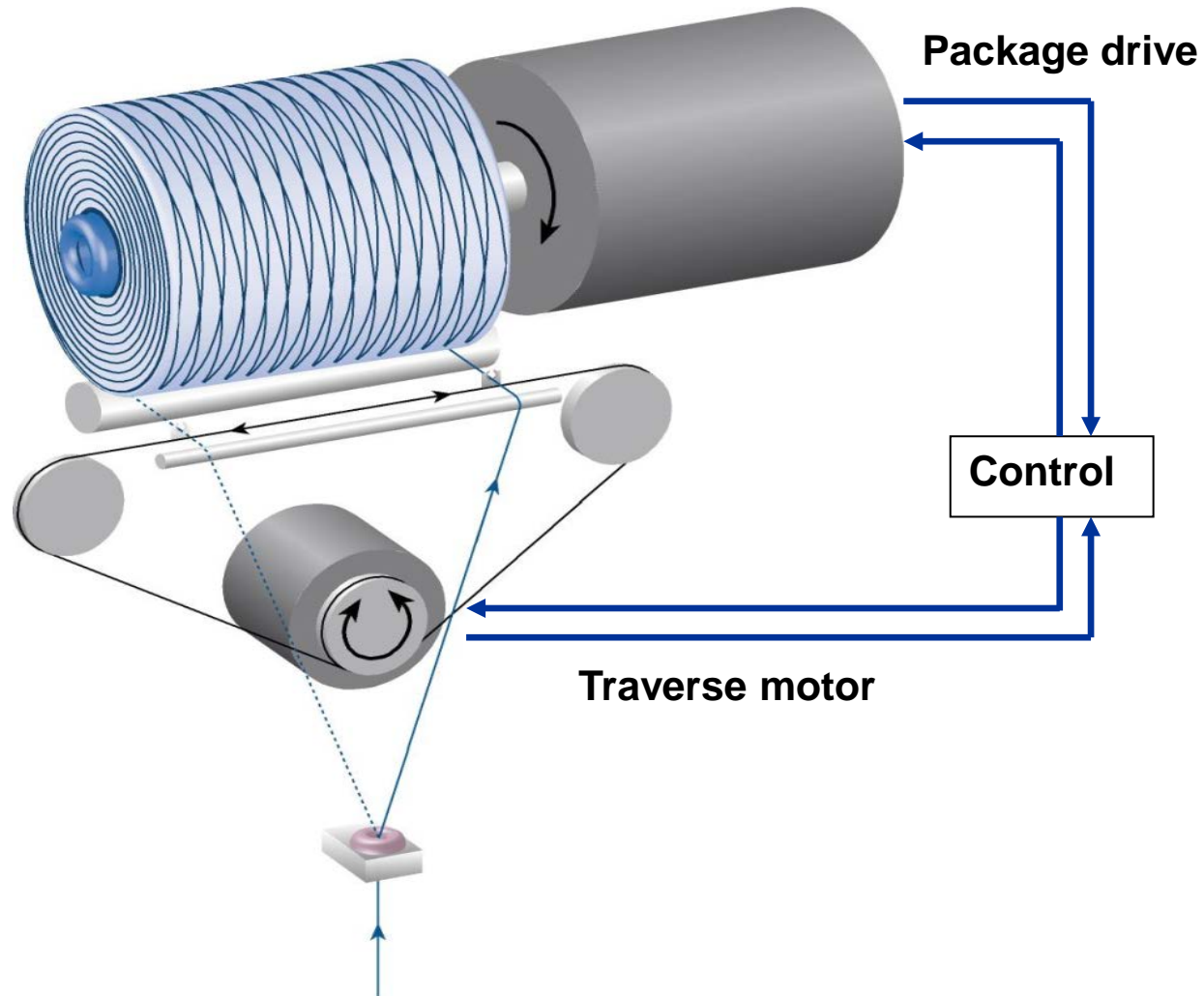
From our beginning in the mid 19th century



...to the future



SSM's Core Competence: Precision Winding



Strong Global Presence

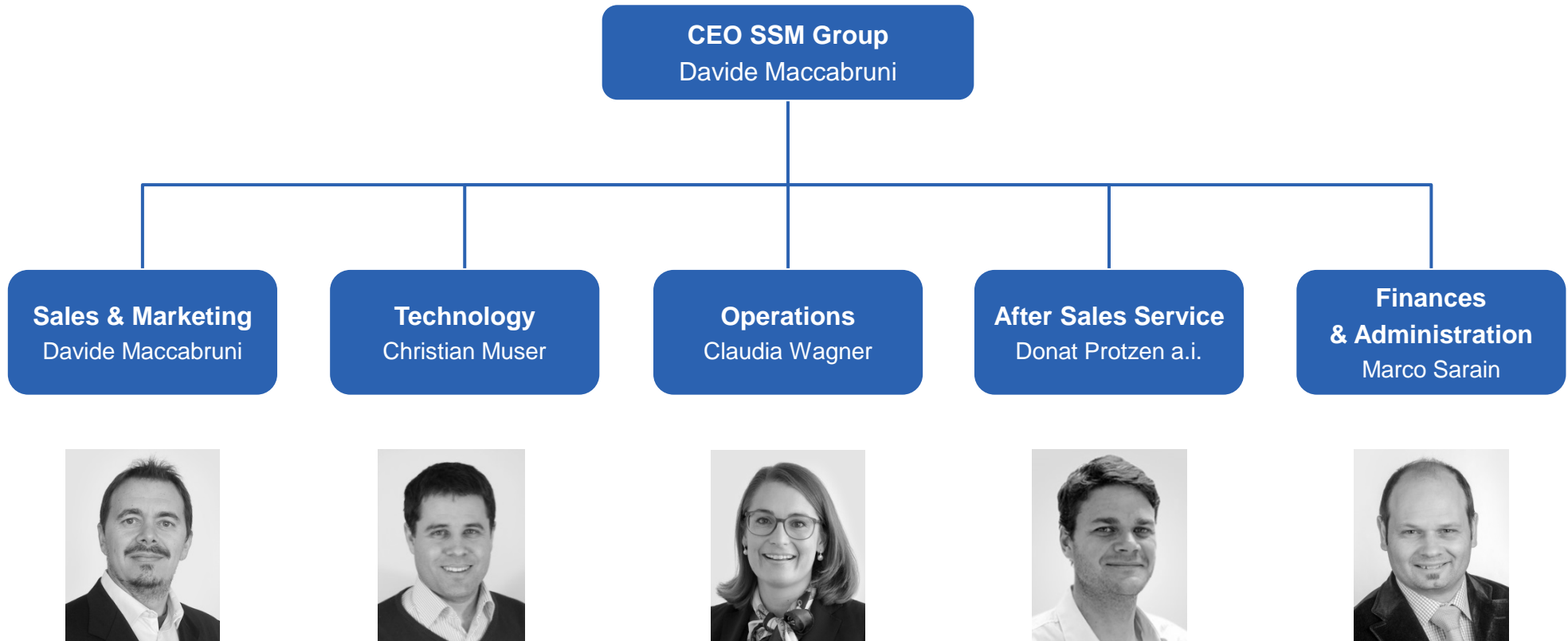


The image features a world map with several locations marked by blue triangles. Three specific locations are labeled: Horgen and Galbiate in Europe, and Zhongshan in Asia. Each label is accompanied by a photograph of a building. Additionally, there are three photographs of SSM industrial machinery: a 'XENO' machine with a control panel and a rack of components, a large white industrial machine with a green frame, and a factory floor with a worker operating a machine. The text '10 local service stations and over 80 agencies worldwide' is centered at the bottom of the map area.

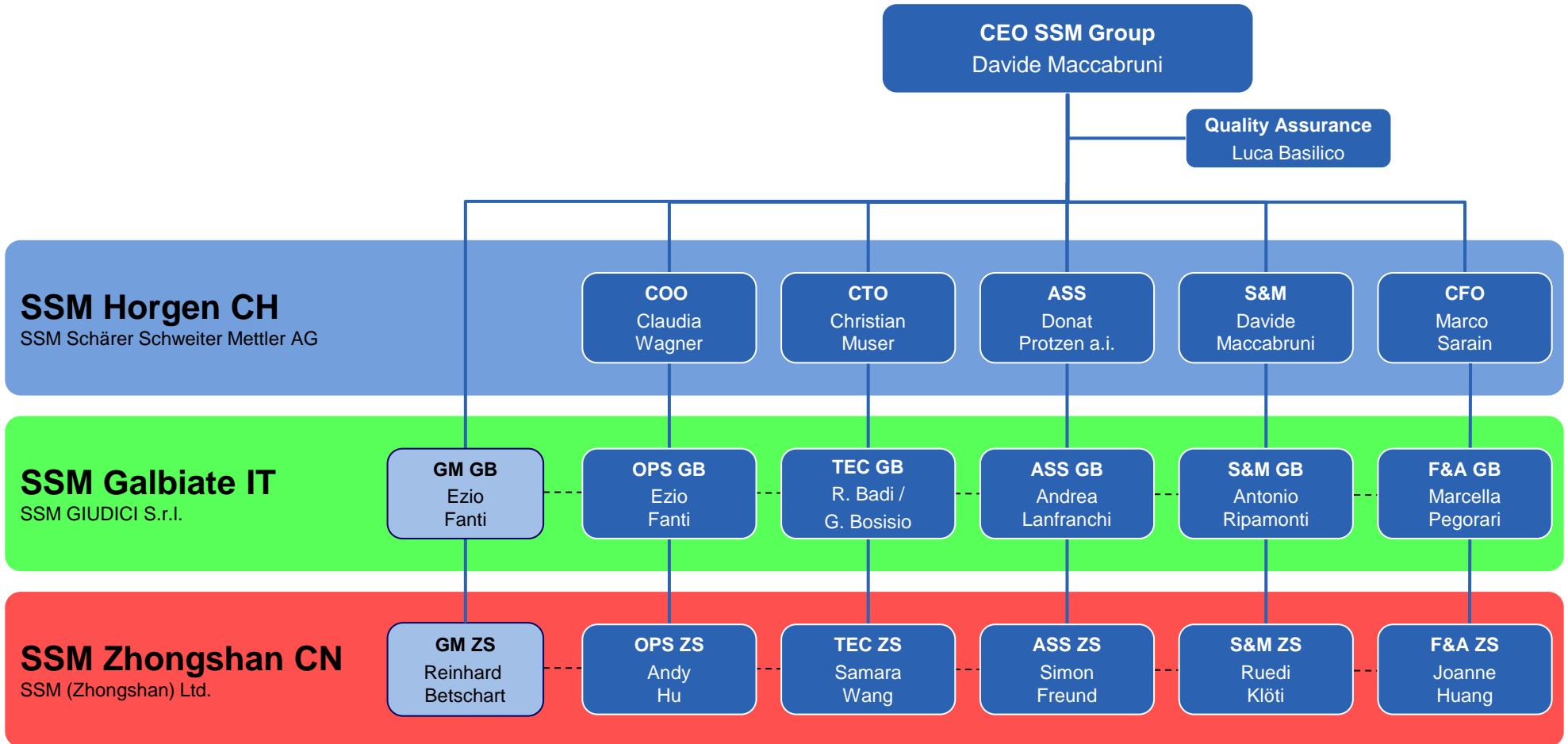
Horgen
Galbiate

Zhongshan

10 local service stations and over 80 agencies worldwide



SSM Organization Chart – Overview Group



SSM Machine Examples



SSM Schärer Schweiter Mettler AG

Neugasse 10, 8810 Horgen, Switzerland

Phone +41 44 718 33 11, Fax +41 44 718 34 51

info@ssm.ch, www.ssm.ch

Leading  technology
for yarn processing and winding

