



SSM Schärer Schweiter Mettler AG

General Presentation 2017





SCHWEITER TECHNOLOGIES

One Group – Two Leading Divisions

SSM Schärer Schweiter Mettler Textile Machinery

Employees 246
Turn Over* 86 MCHF

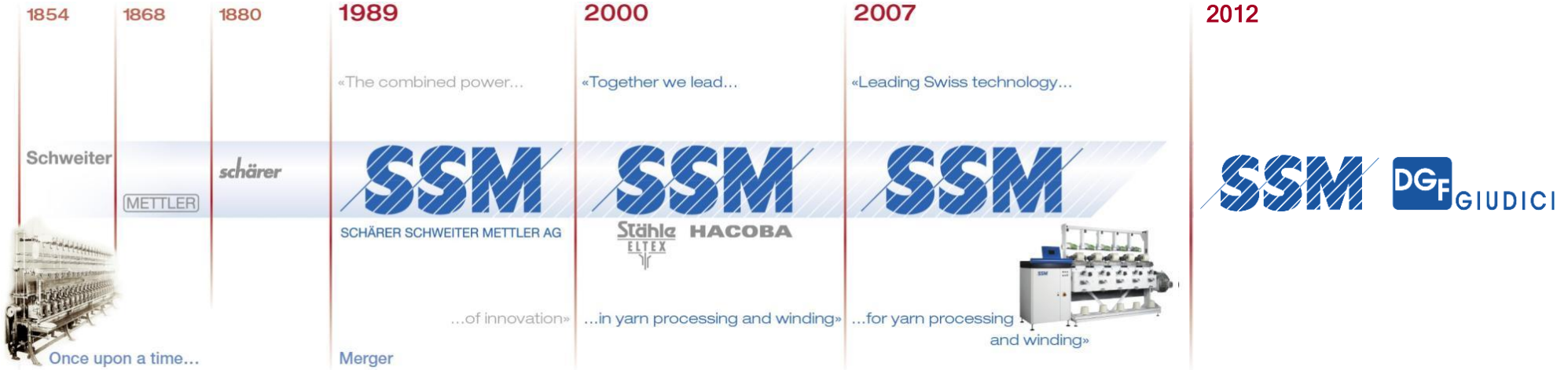


3A COMPOSITES

Employees 4080
Turn Over* 917 MCHF

* net revenues 2016

SSM: Who are we?



2014



Technical Textiles

2017



XENO, DIGICONE® 2 and Dual Product Strategy

A Long History in the Textile Business

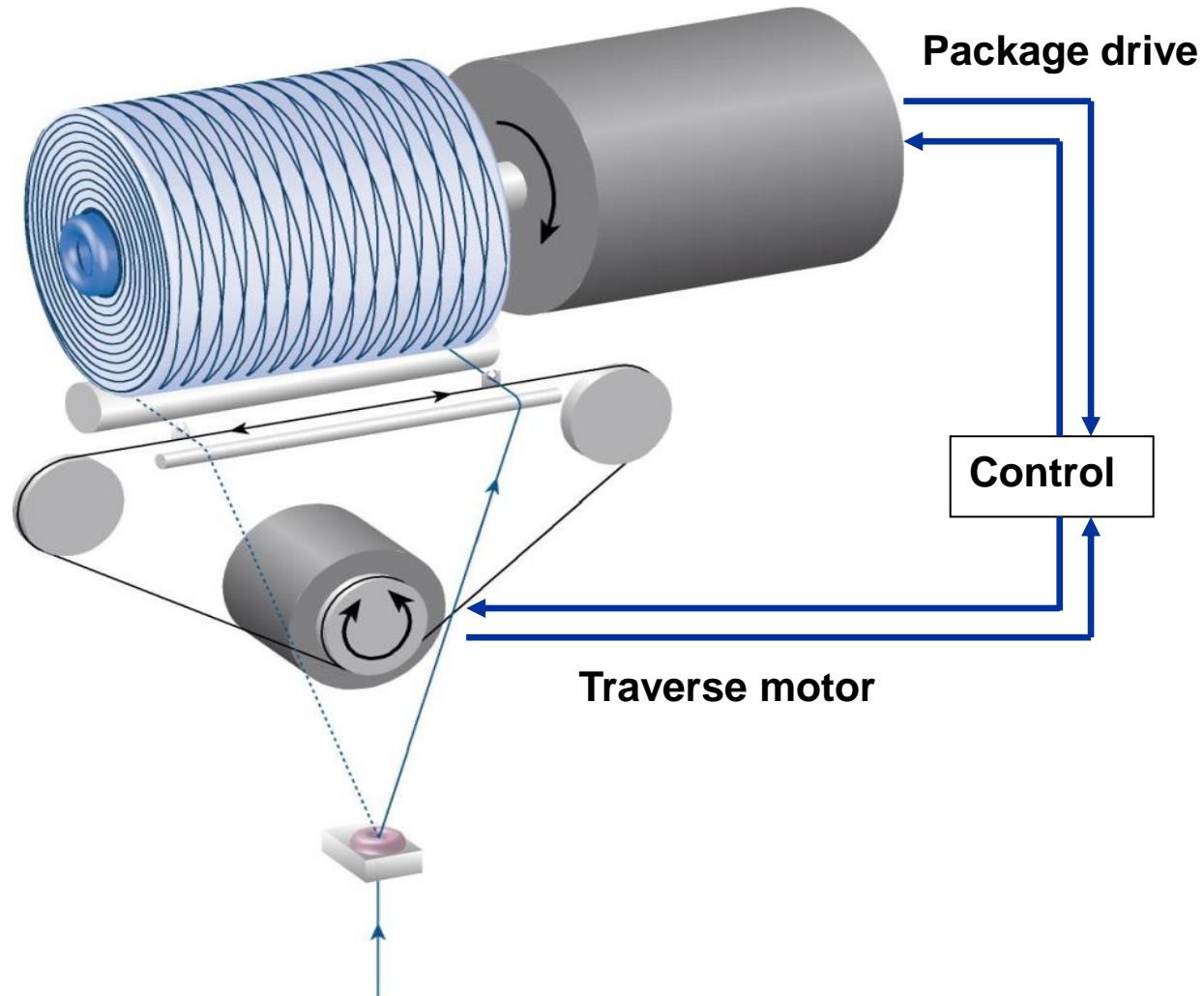
From our beginning in the mid 19th century



...to the future



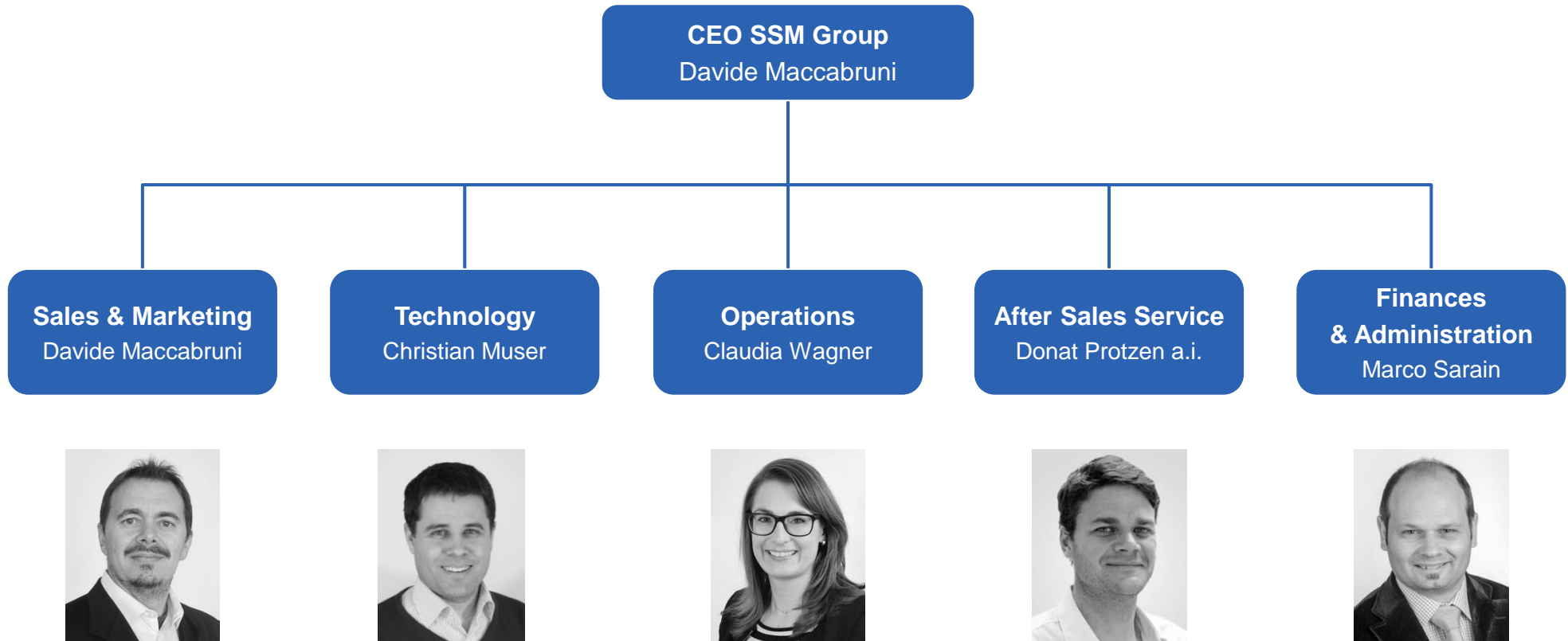
SSM's Core Competence: Precision Winding



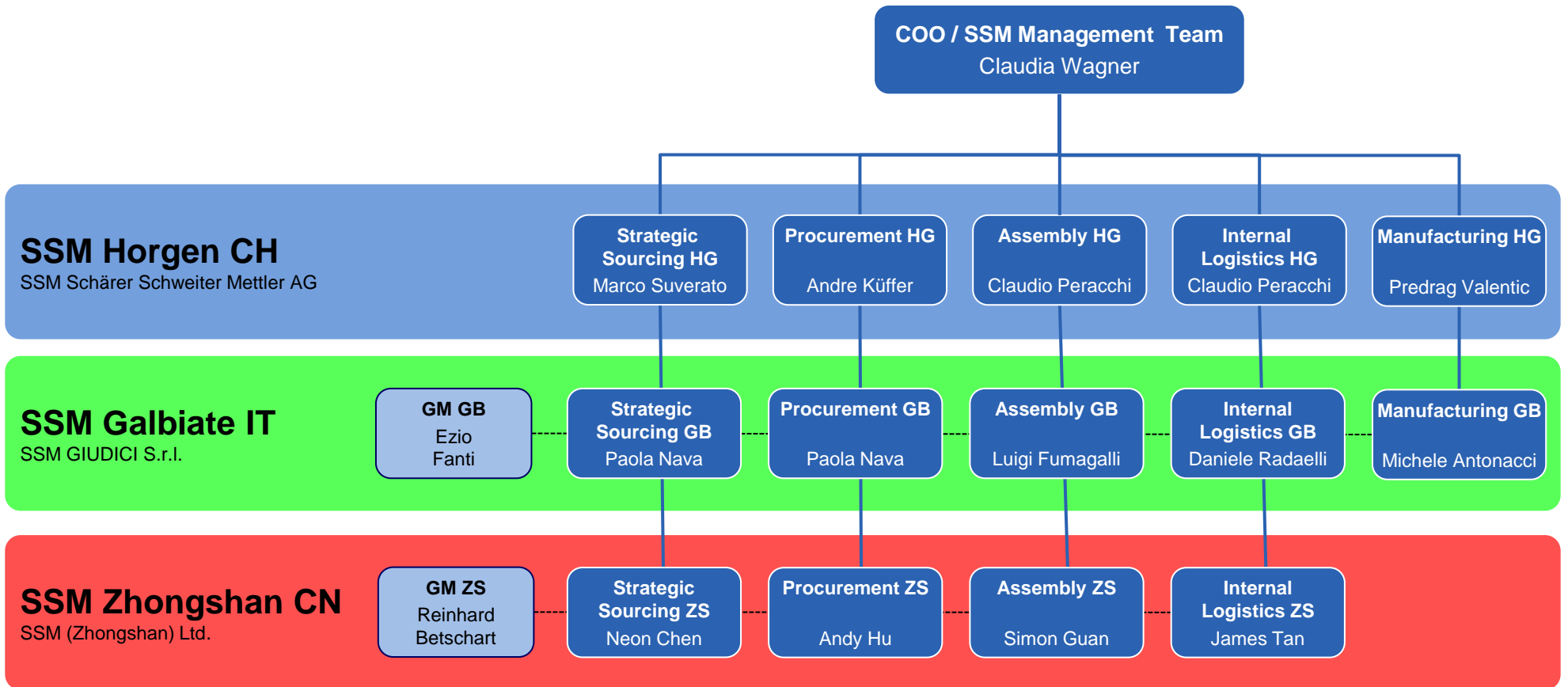
Strong Global Presence



10 local service stations and over 80 agencies worldwide



SSM Organization Chart - Operations



Strategic Sourcing

- Sourcing Strategies
- Coordination R&D Projects
- Change Management
- Contracting

Procurement

- Purchasing
- Supplier Management

Production

- Assembly
- Internal Logistics

Manufacturing

- Prototype Construction

SSM Machine Examples




SSM Schärer Schweiter Mettler AG

Neugasse 10, 8810 Horgen, Switzerland

Phone +41 44 718 33 11, Fax +41 44 718 34 51

info@ssm.ch, www.ssm.ch

Leading  technology
for yarn processing and winding

